

# Climate change adaptation strategies

Stephen Chapple, Regional Director, Port Phillip  
Forest, Fire and Regions Group - DEECA

**Regional South Australia Urban Sustainability Forum** - 23 June 2023



Energy,  
Environment  
and Climate Action

THE BIGGEST  
THREAT TO  
**OUR PLANET**  
IS THE BELIEF THAT  
**SOMEONE**  
**ELSE**  
WILL SAVE IT

Robert Swan



# Presentation overview

## Outline

- Victoria's adaptation program
- Greater Melbourne region and key climate issues
- Govts role in the region
- Adaptation Strategy created with regional partnerships
- 12 Action areas
- Project examples
  - Climate resilient veg Community of Practice
  - Banksia gardens CARYA (video)
  - SECCCA Small Business Adaptation toolkit (video and potential activity)
  - Joey and the Heatwave children's book (video)
  - Exploring the concept of heatwave safe spaces in the west of Melbourne
- Key learnings / themes

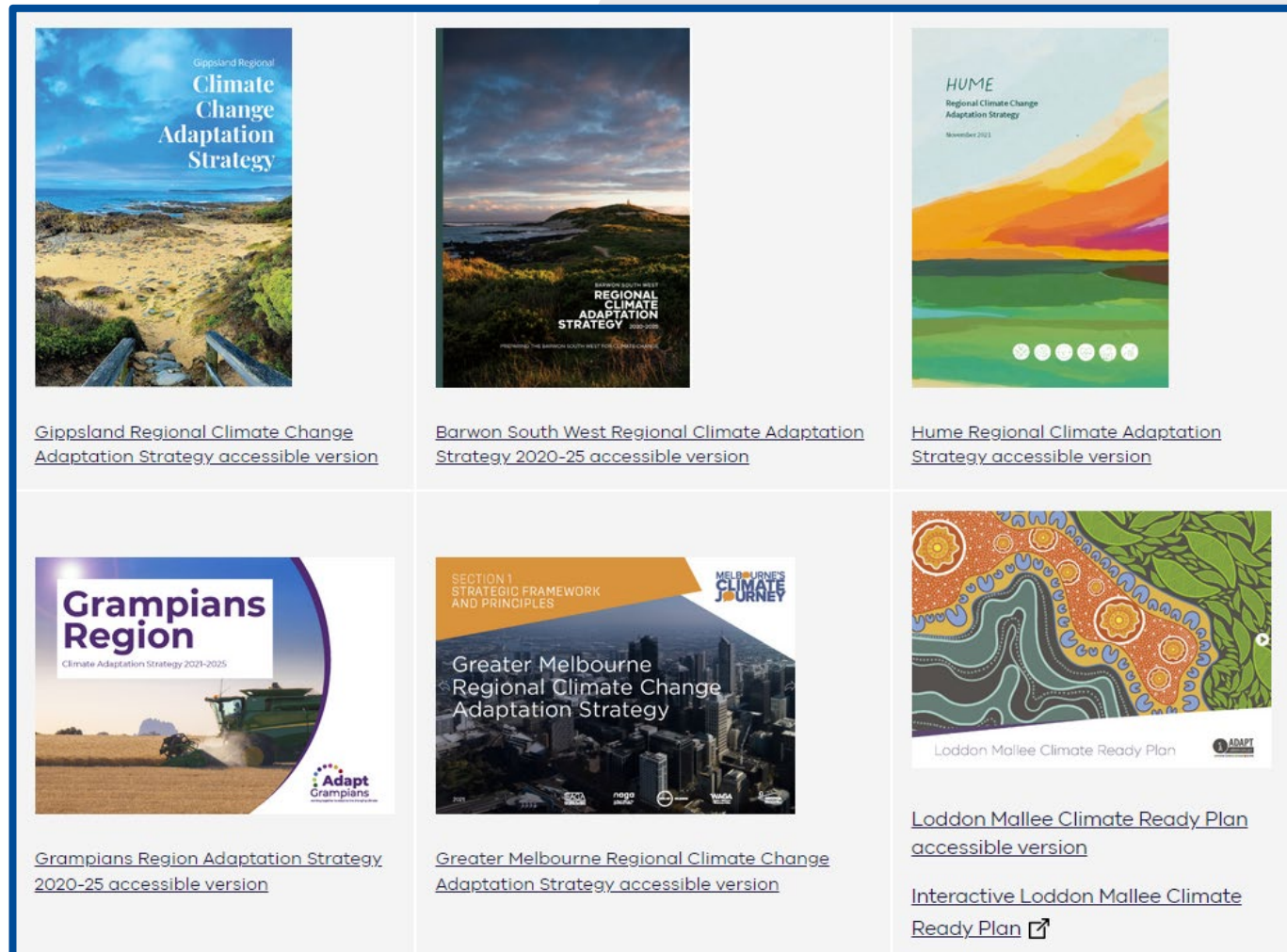


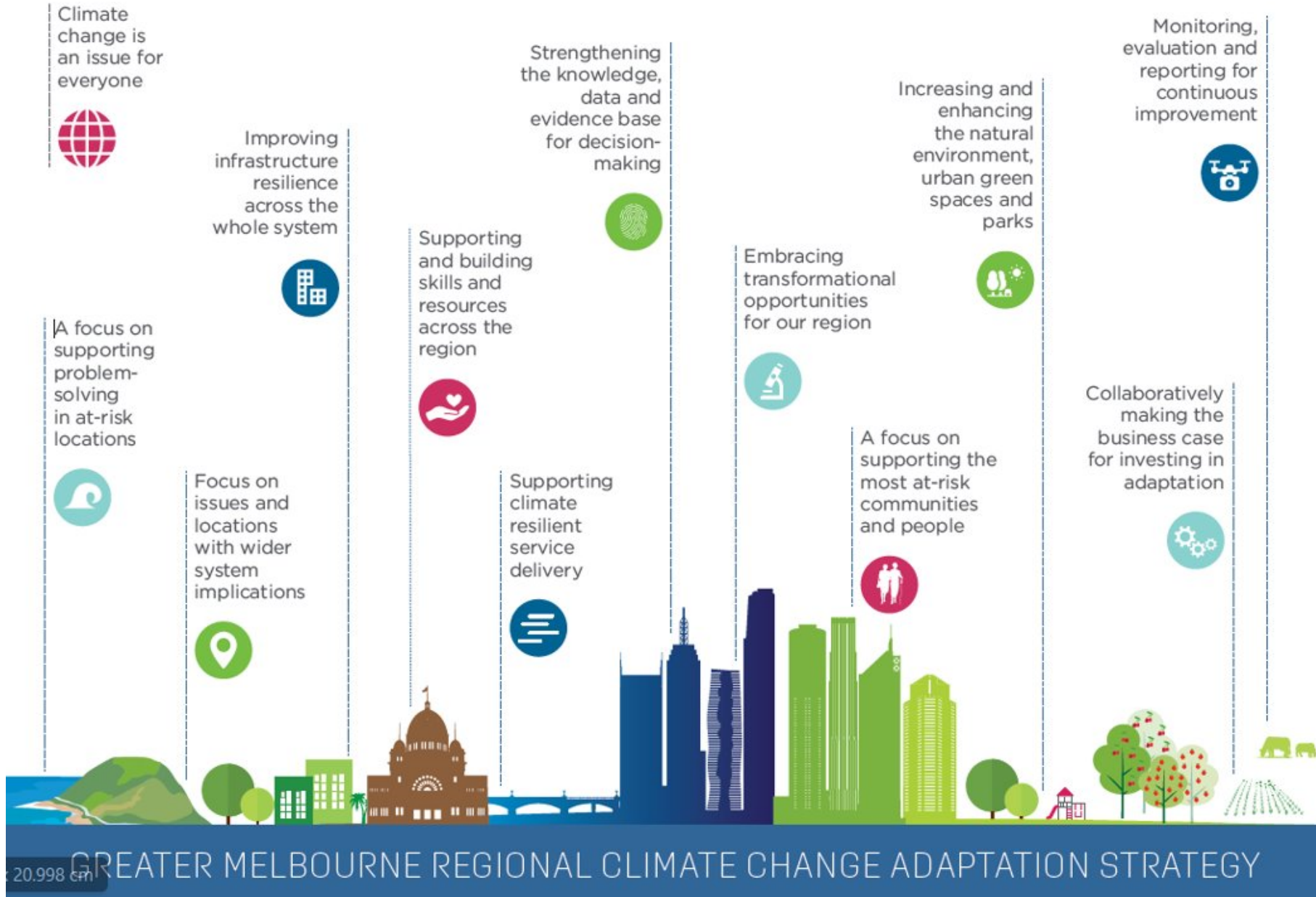
# Greater Metropolitan Melbourne (31 LGAs)



# Regional adaptation strategies

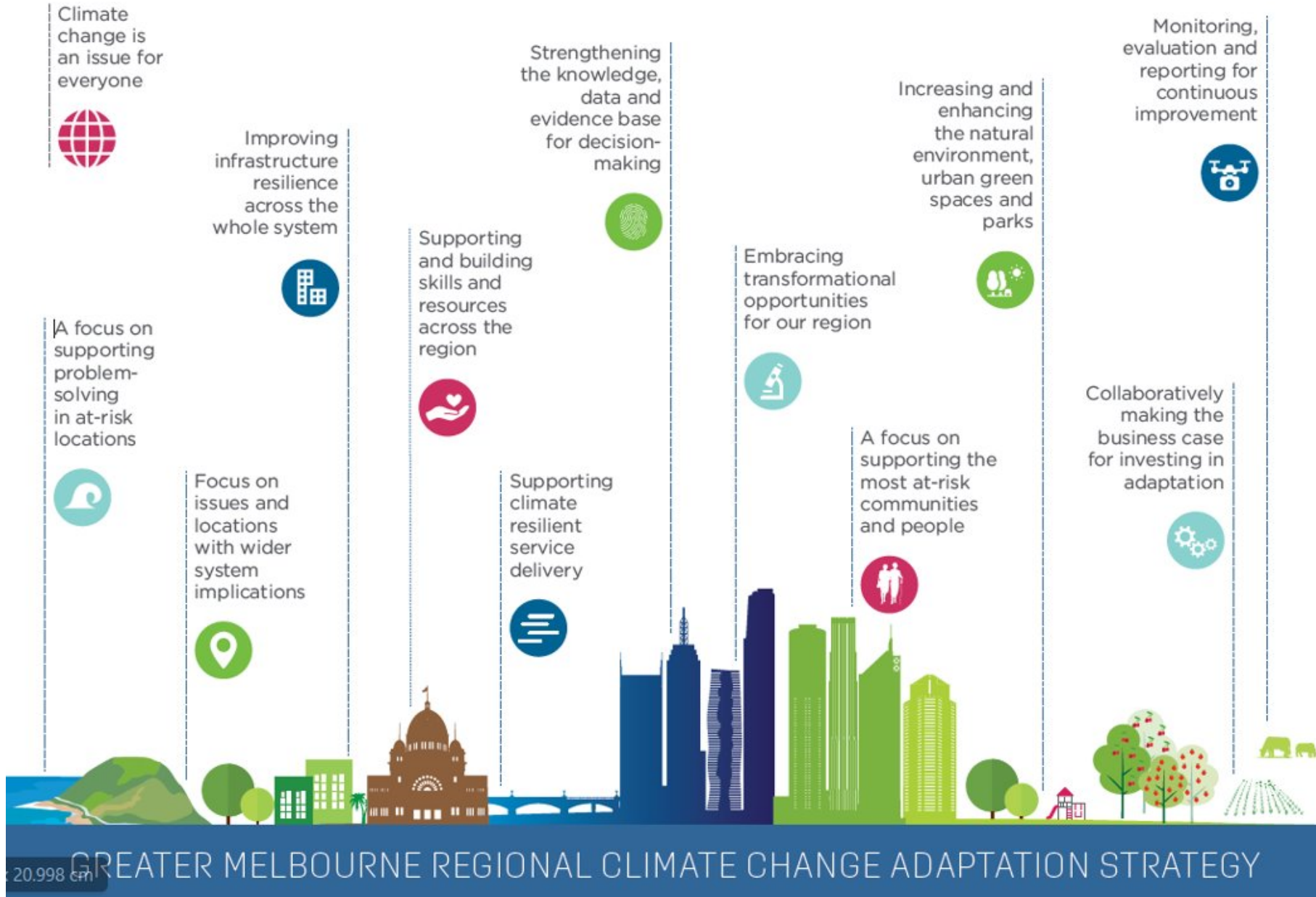
- Each of the 6 regions has a five-year Climate Adaptation Strategy developed by the community to address the unique challenges and opportunities that climate change brings to Victoria's regions and guide locally relevant practical action.
- Themes in the strategies include:
  - preparing for and recovering from emergencies
  - caring for the natural environment
  - improving health and wellbeing
  - strengthening the economy and workforce
  - improving resilience of our built environment
  - embracing renewable energy.





20,998 cpm

GREATER MELBOURNE REGIONAL CLIMATE CHANGE ADAPTATION STRATEGY



20,998 cpm

GREATER MELBOURNE REGIONAL CLIMATE CHANGE ADAPTATION STRATEGY

# Partnerships

- Big lesson is the importance of a range of partnerships.
- Making adaptive and transformational change together
- Climate change is everyone's problem
- Emphasis on collaboration, co-design, linking networks and partnering in projects
- Move beyond 'business as usual' - we need to ask the hard questions





# Climate Resilient Veg Community of Practice

- Knowledge sharing forums for practitioners
- DEECA regional team provided administrative support
- Online information sharing events
- Formalisation of the CoP and areas of focus
- Aligns with at least 3 action areas



# Climate Adaptation Requires Youth Action

- A community-based project focused on young adults
- Provided training package to become leaders in climate action
- To inform and inspire, to encourage collective adaptation action
- Targeting a disadvantaged area of Melbourne
- Delivered through a Community Service organization
- Victorian government funded program, now continued by a philanthropic foundation

## CARYA training – 2023

The brilliant CARYA training is running again in 2023, applications open now!

Join a wonderful, creative and enthusiastic group to learn about all things climate adaptation and sustainability. Featuring workshops, excursions and more, this FREE workshop starts 16 March, 2023.

[Apply for CARYA 2023 through this Google Form.](#)

For questions, please contact Edgar ([edgar.c@banksiagardens.org.au](mailto:edgar.c@banksiagardens.org.au)) or Tess ([tess.c@banksiagardens.org.au](mailto:tess.c@banksiagardens.org.au))



**Are You A Young Person Concerned About The Climate Crisis?**

Climate Adaptation Requires Youth Action (CARYA) is an exciting training program for 18-29 year olds to get your hands, heart and brain working on solutions.

This free 8-week training program will be followed by a youth-led project directed by

Training begins first week of March



# Small Business Climate Adaptation Toolkit

- Partnered with South East Councils Climate Change Alliance (9 local governments) and consultant group **Science into Action**
- Project resulted in a Toolkit, case studies and final report
- Kit outlines a practical step by step method to identify
  - what climate change impacts might affect a business
  - what could be done to prepare



# Small Business conversation / activity

Table / Group Activity:

1. What businesses in your region could be impacted by climate change?
2. What aspects could be impacted?
3. How progressed are businesses in your region in thinking about climate change adaptation?

# Joey and the heatwave

- Climate-related messages are best developed and delivered from within the impacted communities
- Focus on SE Melbourne (refugee, asylum-seeker and migrant) Multi-cultural community, wanted a unique communication tool for primary school kids and their newly arrived families
- Co-design approach – primary school and a Community Service Organisation
- The book was created and distributed locally, then it was translated into 5 community languages and distributed further across Melbourne
- Also now distributed to Community health organizations, Anglicare, libraries, kindergartens, Neighbourhood Houses, Migrant Resource Centres



ច្រុះកូនសត្វកង់ហ្គារូ បានទៅរក **ម្លប់** ខ្លះ ដែលមិនជាត្វាយពេកទេ។  
នៅក្រោម **ដើមឈើទាលធំមួយ** ដែលមានសត្វខ្លាញ់ (Wombat) ក្រាបនៅទីនោះ។  
ចេញពីកម្ដៅព្រះអាទិត្យ វាបានចាប់ផ្ដើមមានអារម្មណ៍ប្រសើរឡើង។  
ប៉ុន្តែវានៅតែកៅខ្លាំង ដូច្នេះវាបានទៅរក **ទឹកខ្លះ!**

# Exploring the concept of heatwave safe spaces

- In Melbourne's west - Mapping shows heat areas
- Some people cannot 'stay at home' in the heat
- Some buildings / places are already used in heatwaves
- Project:
  - Select buildings
  - Assess buildings
  - Community engagement
  - Discuss potential operation and use issues



# Climate Ready Councils

- Designed to improve how climate change adaptation is embedded across councils at the governance level
- Included adaptive 'self assessment' process with council through training workshops, materials and one-on-one mentoring
- Assisted councils to develop a Council Plan is prioritised and embedded across councils' governance processes



# Key learnings

- Regional and Community-based organisations generally know who their most at-risk groups are
- SMEs might not be aware of their risks or what could be done to prepare
- Communities of Practice are very relevant in this space – govt orgs can have a role in supporting the conversations, and may be able to step aside once process established
- **Projects and ideas can start small and be built on or expanded if they work (small initial investment)**
- Funding the first step of a project can be worthwhile (can be replicable, scaleable)
- Government supporting and empowering communities to create their own local solutions for resilience is very effective (from the SORAd eval)
- **Building good partnerships takes time**
- Try and engage multiple parts of local government to solve problems and talk about climate change: [e.g. Ec development, buildings and grounds, finance, risk mant]
- Some surprising partnerships can work very well – explore the unexpected. E.g partner with community health orgs, cropping groups, local recycling group, social support groups, youth.
- Engaging and talking and raising awareness of the areas that can be impacted by climate is a critical starting point.
- Climate related messaging is best created and shared by the groups that are impacted.



# Practical examples of climate adaptation work

- Creating climate and community leaders through CARYA – Climate Adaptation Requires Youth Action
- How a green space helps in the heat
- Climate change adaptation stories
- <https://youtu.be/B8geNhYSVC0?t=330>
- SEECA video
- Reports - Climate Change in Australia
- <https://www.climatechangeinaustralia.gov.au/.../reports>
- **WebReports. Reports.** MacDonnell Ranges, Northern Territory. Technical **Report**. The Technical **Report** is intended to provide detailed information for researchers and decision

# Greenlink Project, Dimboola





Energy,  
Environment  
and Climate Action